

'Unique Impressions'

Artist Trading Card Technique

By *Debbi Bovio*

Instructions are for creating approximately 72 ATC cards

Materials

1 Sheet 22" x 30" Watercolor paper (hot or cold press, available in most art supply stores)

Various watercolor paints or pigments

Soft bristle paint brushes

Fine and medium point black ink pens

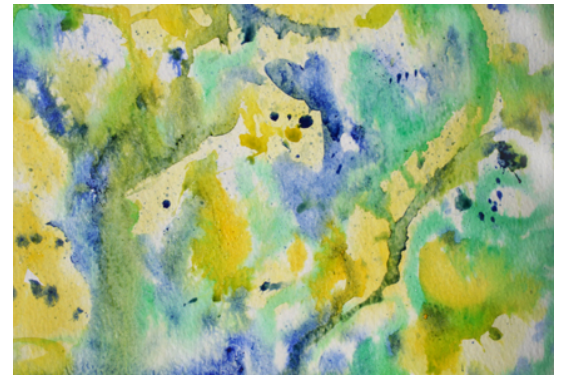
White School Glue and/or gluesticks

Suggested optional materials:

Colored Pencils, crayons, additional paints, gel pens, newspaper or magazine cutouts, glitter, sandpaper, clear acrylic glaze

- *Accurately cut the large sheet of watercolor paper into NINE 7" x 10" rectangles (be sure to make straight cuts).*
- *Divide students into groups of 4 or less.*

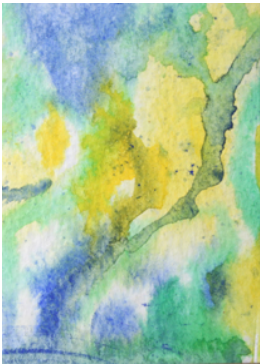
1. Saturate watercolor paper with water using either a soft flat brush or a spray bottle. Add splotches, dabs and splatters of various colors of paint/pigment to most (approximately 80 %) of the surface. Quickly tilt and rotate paper to allow colors to spread and blend gently with other colors. Too much blending results in muddy colors and lack of definitive shapes. More color can be added after a few minutes to add layers of saturate color (since the paper is less moist the colors will not spread as far).



2. Allow paper to dry overnight. You may place a book or heavy object atop paper for a few hours to flatten it.

student samples by Sabrina and Monica

3.



Accurately cut completed watercolor paper into 2.5" x 3.5" rectangles. Each student will select a card to design.

4. Observe the card both horizontally and vertically to search for design clues that will be the foundation of your composition. Use black pen to outline the contour shapes in your composition. Use crosshatching or pointillism methods to add depth and interest.



5. Colored pencil or other materials may be used to help define the shapes if you wish to add detail.



6. You will need to provide a solid, sturdy backing for your card. Cardboard or poster board works well. Cut into exactly 2.5" x 3.5" inch rectangles. Decorate one side with a simple design. Include your name, the date and the title of the artwork. Glue securely onto backside of watercolor paper. Apply glue over entire surface, up to the edges. Apply pressure and wipe away any excess glue.



Make sure your card is squarely cut to the exact size of 2.5" x 3.5". If your watercolor paper is too small the correct size backing cardboard will provide a nice border 'frame' around your artwork. You may choose to intentionally make your watercolor paper smaller to include this feature.



7. Finish the edge of your card by gently sanding rough edges and using a marker to color the cut edge if needed. To protect card surface apply a clear acrylic glaze to both sides of the card.



Photos and non-student artwork by Debbi Bovio.