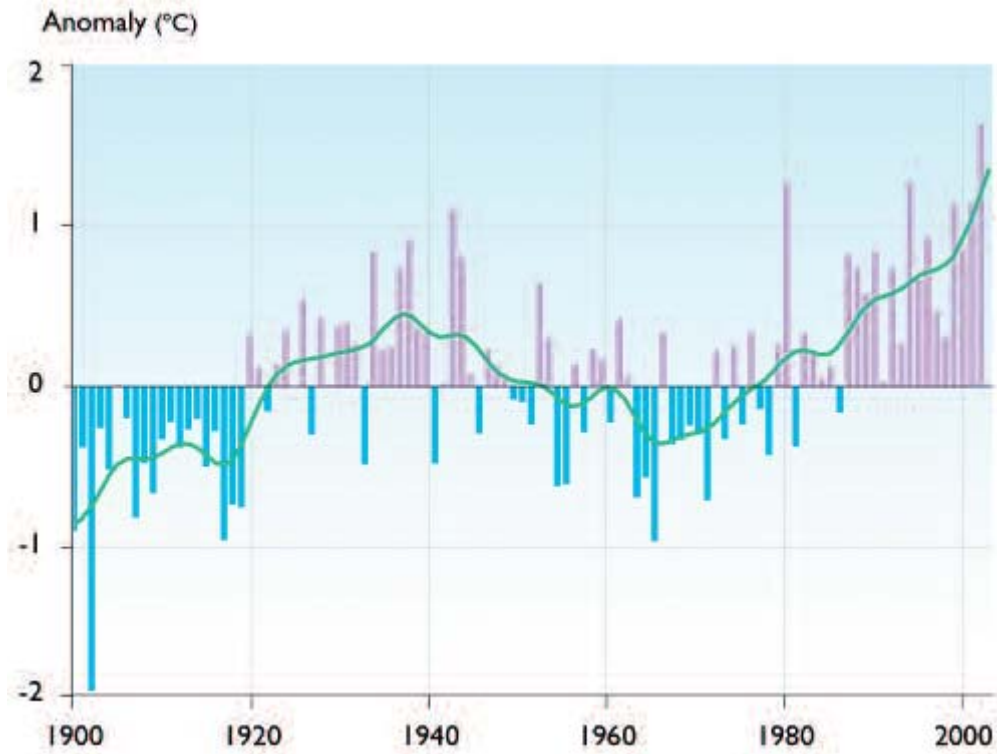


ARCTIC TEMPERATURE (1900-2003)

The purple bars represent individual years with above normal temperatures; the blue bars represent individual years with below normal temperatures. The green line depicts the general trend.



Annual anomalies of land-surface air temperature in the Arctic (60° to 90° N) for the period 1900 to 2003 using the GHCN dataset (updated from Peterson and Vose, 1997). Anomalies are calculated relative to the 1961–1990 average. The smoothed curve was created using a 21-point binomial filter, which approximates a 10-year running mean.

Source: Arctic Climate Impact Assessment, <http://www.acia.uaf.edu/pages/scientific.html>

